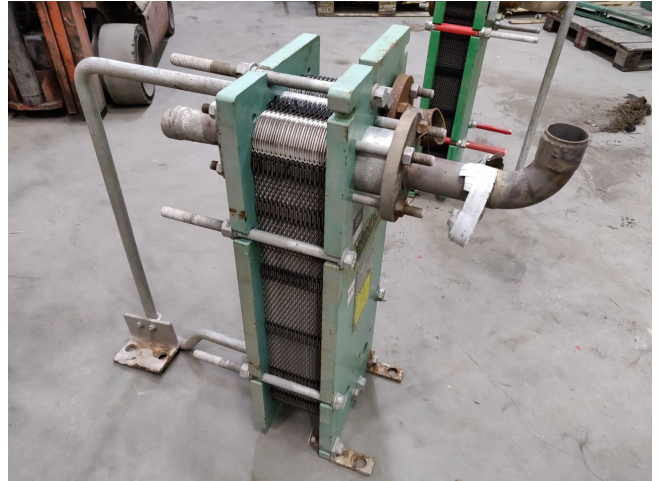


Cetetherm CT210DS-GP/34

Specifications

| | |
|--------------------|---------------------------|
| Merke | Cetetherm |
| Art | CT210DS-GP/34 |
| Product type | PHE |
| Size | 720x330x920 mm (LxWxH) |
| Layers / Cassettes | 17 (13,7 cm) |
| Volume | 13,8 Ltr. |
| Remarks | Width Plate: 5,4cm |
| Stock | 1 |



Description

Used Cetetherm CT210DS-GP/34

Used Heat Exchanger built by Cetetherm type CT210DS-GP/34 // Layers: 17 (13,7 cm)// Inhalt: 13,8 Ltr. // Sizes: 720x330x920 mm (LxWxH) / Width Plate: 5,4cm

